



Care & Repair Gofal a Thrwsio



What we do

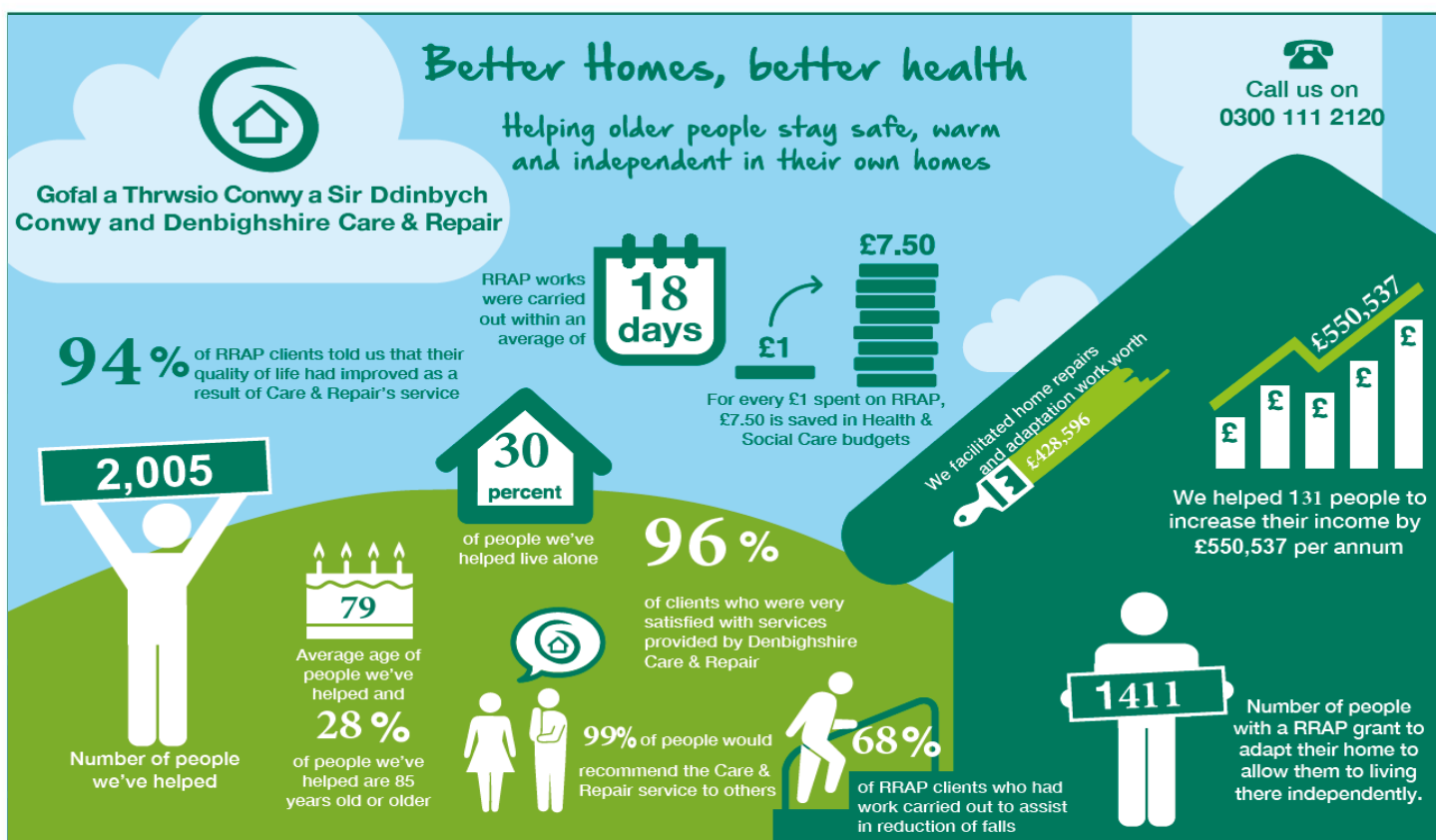
Care & Repair helps older people to repair, adapt and maintain their homes so they can stay living independently in their own homes.

Our vision is a Wales where all older people can live independently in safe, warm, accessible homes

As the Older People's Housing Champion, we have delivered, evolved and innovated services that help older people live independently in their own homes for over 30 years. We work with a wide range of local and national partners including Welsh Government, Local Authorities, Health Boards, DWP and The Big Lottery Fund.

Our service is person centered and tailored to each individual's needs. Experienced staff visit people at home and provide advice and support on a range of issues including;

- Home repairs, maintenance & adaptations
- Home Safety
- Falls prevention
- Energy efficiency & heating the home
- Income maximisation
- Applying for grants & benevolent funds



2017/18 figures for Denbighshire Core Services and Rapid Response Adaptations Programme (RRAP)



Speak to us on **0300 111 3333** or email enquiries@careandrepair.org.uk
www.careandrepair.org.uk



find us on





Care & Repair
Gofal a Thrwsio



Yr Hyn a Wnawn

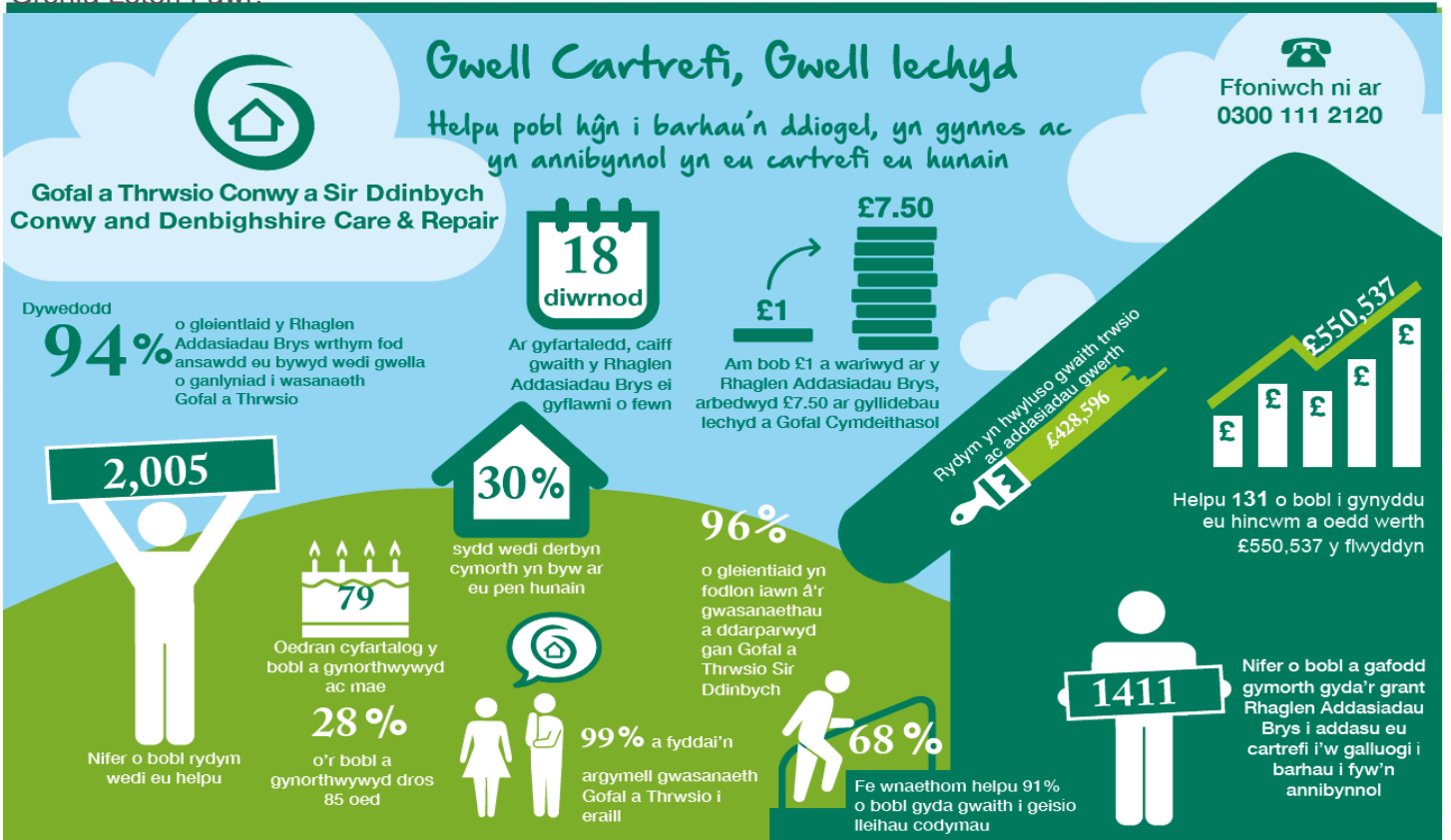
Mae Gofal a Thrwsio yn helpu pobl hŷn i atgyweirio, addasu a chynnal a chadw eu cartrefi fel y gallant ddal i fyw'n annibynnol yn eu cartrefi eu hunain.

Ein gweledigaeth yw Cymru lle gall pob person hŷn fyw'n annibynnol mewn cartref diogel, cynnes a chyfleus.

Fel Hyrwyddwr Tai Pobl Hŷn, am dros 30 mlynedd rydym wedi cyflwyno, esblygu ac arloesi gwasanaethau sy'n helpu pobl hŷn i fyw'n annibynnol yn eu cartrefi eu hunain. Gweithiwn gydag ystod eang o bartneriaid lleol a chenedlaethol yn cynnwys Llywodraeth Cymru, Awdurdodau Lleol, Byrddau Iechyd, yr Adran Gwaith a Phensiynau a'r Gronfa Loteri Fawr.

Mae ein gwasanaeth yn canoli ar y person a chaiff ei deilwra ar gyfer anghenion pob unigolyn. Mae staff profiadol yn ymweld â phobl yn eu cartrefi ac yn rhoi cyngor a chefnogaeth ar amrywiaeth o faterion yn cynnwys:

- Atgyweirio, cynnal a chadw ac addasu cartrefi
- Diogelwch cartrefi
- Atal cwmpadau
- Effeithiolrwydd ynni a gwresogi'r cartref
- Cynyddu incwm
- Gwneud cais am grantiau a chronfeydd buddiannol



Ffigyrau 2017/18 ar gyfer Gwasanaethau Craidd Sir Ddinbych a'r Rhaglen Addasiadau Brys

Grŵp Cynefin
Mwy na thai • More than housing

Care & Repair Cymru

Nodir gan Lywodraeth Cymru
Sponsored by Welsh Government

Ffoniwch ni ar 0300 111 3333 neu e-bost enquiries@careandrepair.org.uk
www.careandrepair.org.uk



ddod o hyd i ni ar

